

Easy 2023 Release Notes



November 2022
technet GmbH, Breitscheidstraße 4, 70174 Stuttgart, Germany

Contents

- 1 Installing 2
- 2 System Requirements 2
- 3 Licensing 2
- 4 New AddOn – Equidistant mesh..... 3
- 5 EasyShell 4
- 6 EasyDWT – Digital Wind Tunnel 5
- 7 GED - Graphical editor 6
- 8 Strip 6
- 9 EasyTailor 7
- 10 Brep2Easy – Rhino PlugIn 8

Easy 2023 Release Notes

November 2022
technet GmbH, Breitscheidstraße 4, 70174 Stuttgart, Germany



1 Installing

Please note that installing Easy Release 2023 will not overwrite an older (2022, 2021, ...) existing installation of Easy. You can use Easy 2023 and an older release of Easy on the same computer.

2 System Requirements

Operating systems:

- Windows 11 (current service pack) 64-bit
- Windows 10 (current service pack) 64-bit

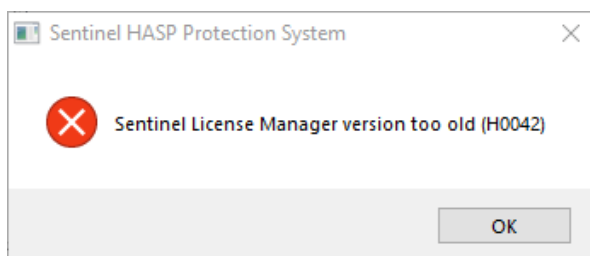
Minimum Hardware:

- A graphic card with an OpenGL accelerator is strongly recommended.

3 Licensing

Easy Release 2023 requires a new password!

Easy2023 requires the latest drivers for the protection plug. If you receive the following error message when starting the program, you must install the provided Sentinel driver on your computer and, if necessary, on a license server.



4 New AddOn – Equidistant mesh

The newly developed add-on "EquidistantMesh" contains tools for generating equidistant mesh structures. The equidistant meshes can be transferred to a static calculation.

In addition, the netplan program generates cutting plans and associated parts lists for the equidistant meshes.

A separate licence is required for the add-on.

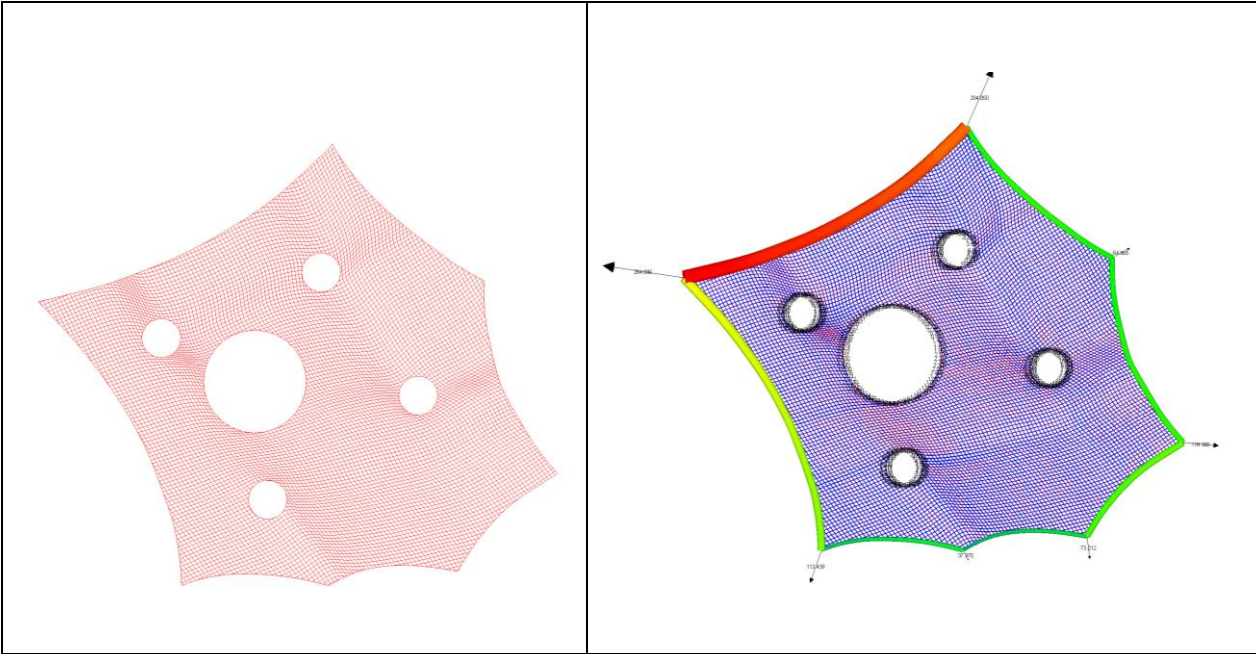


Figure 1: Equidistant mesh on figure of equilibrium – here all link lengths are 0.3m (left), Equidistant mesh after statics

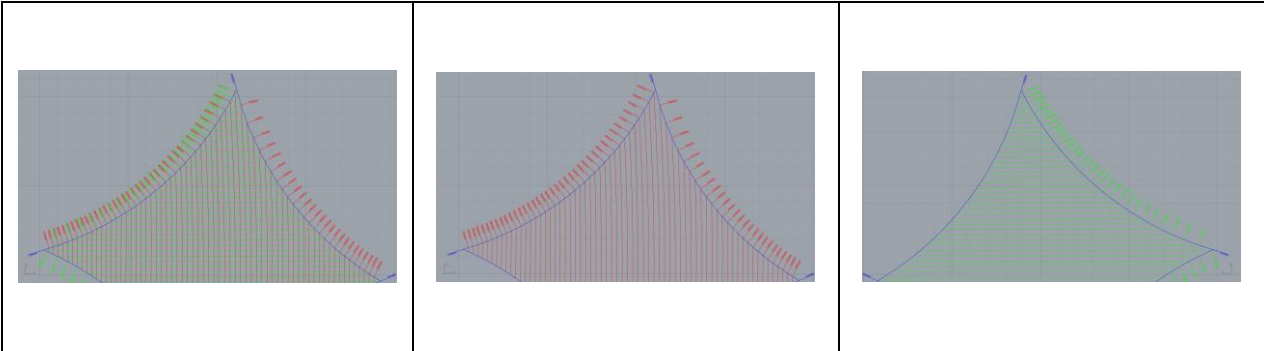


Figure 2: Graphical representation of the network plan

Easy 2023 Release Notes

November 2022

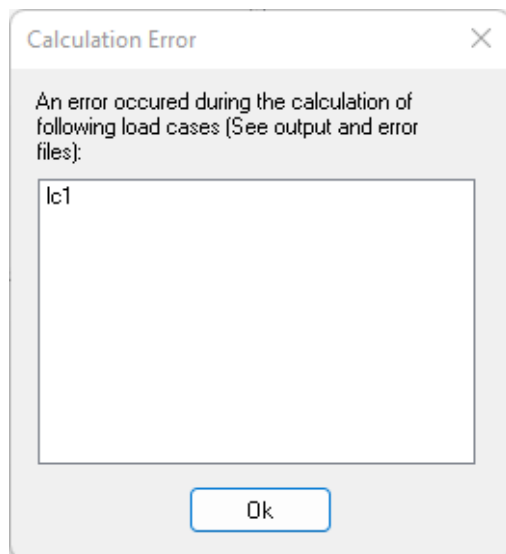
technet GmbH, Breitscheidstraße 4, 70174 Stuttgart, Germany

Cable No.	Total length [mm]	Free cable section at the beginning [mm]	Free cable section at the end [mm]	No. of meshes	No. of node points
1000007	399	108	291	2	1
1000008	687	221	166	3	2
1000009	983	36	48	5	4
1000010	1314	169	245	5	4
1000011	1646	3	143	7	6
1000012	1990	138	52	8	7
1000013	2369	292	277	8	7
1000014	2754	150	203	10	9
1000015	3155	9	147	12	11
1000016	3591	189	103	13	12
1000017	4035	75	60	15	14
1000018	4517	262	55	16	15
1000019	5027	174	53	18	17
1000020	5566	92	74	20	19
1000021	6130	16	113	22	21
1000022	6739	267	173	23	22
1000023	7387	222	265	25	24
1000024	8077	197	79	28	27
1000025	8825	192	234	30	29
1000026	9621	195	126	33	32
1000027	10501	239	62	36	35
1000028	11459	288	71	39	38
1000029	12518	81	137	43	42
1000030	13669	183	287	46	45
1000031	15005	40	265	51	50
1000032	16583	212	171	56	55
1000033	17859	154	5	61	60
1000034	17879	131	48	61	60
1000035	18000	167	133	61	60
1000036	18246	5	241	62	61
1000037	17689	197	92	60	59
1000038	16517	63	255	56	55
1000039	15466	10	156	53	52
1000040	14487	18	69	50	49
1000041	13561	53	8	47	46

Figure 3: Parts list of the ropes

5 EasyShell

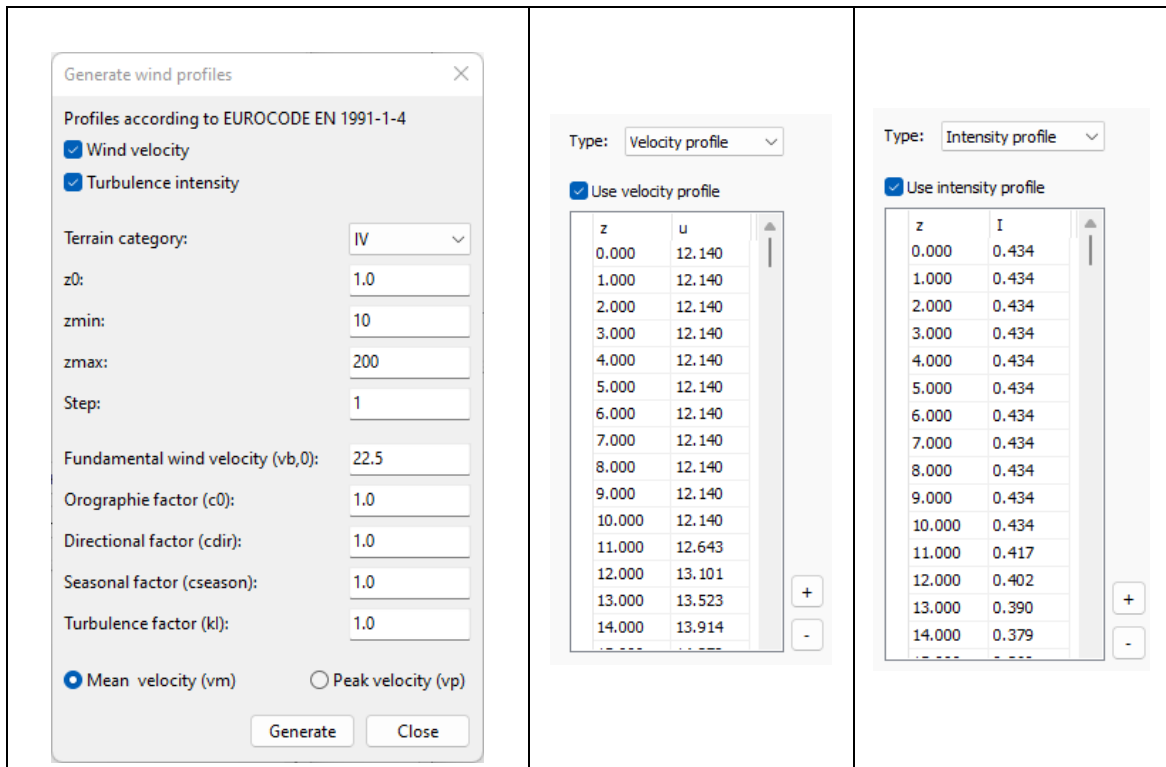
- Calculate all Load Cases or Combinations: All failed load cases are listed at the end.



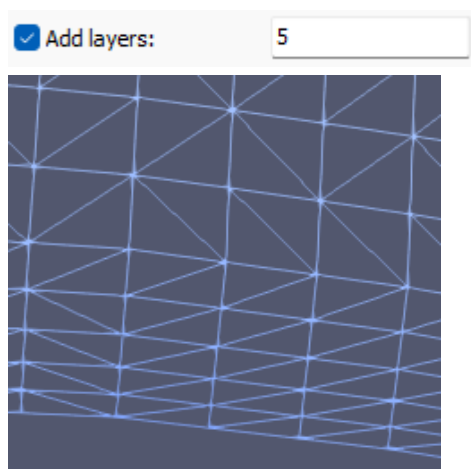
Easy 2023 Release Notes

6 EasyDWT – Digital Wind Tunnel

- Generator for wind profiles (velocity and intensity) according to EUROCODE EN 1991-1-4:



- Adding mesh layers at ground and surfaces:



Easy 2023 Release Notes

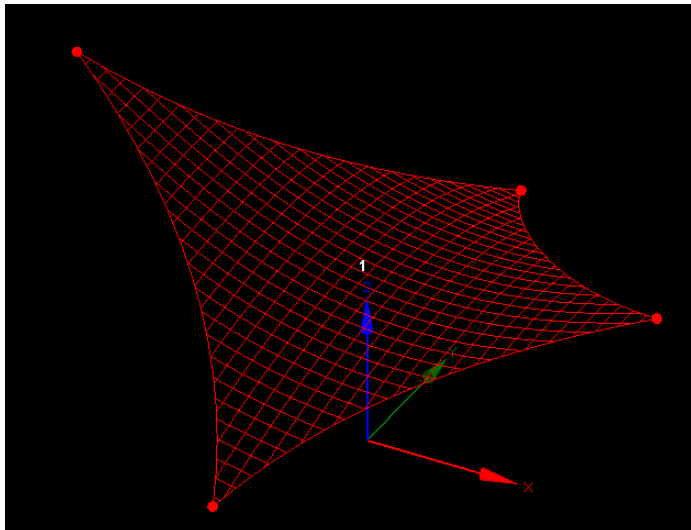
November 2022

technet GmbH, Breitscheidstraße 4, 70174 Stuttgart, Germany

- 3rd party tools updated:
 - OpenFOAM® v2206
 - ParaView v5.10.1
 - MS_MPI v10.1.2

7 GED - Graphical editor

- Dxf/dwg import: Ignore topologically incorrect triangles and polygons (could be caused by point merges)
- Color settings for rubber band and outlined cursors: Optional graphic area with black background.



8 Strip

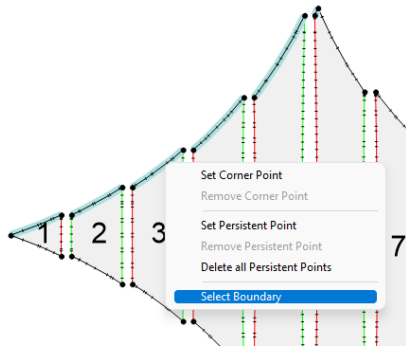
- Change: Snapped kink points from the background files are projected onto the triangles.
- Colour settings for rubber band and outlined cursors: Graphic area with black background.

Easy 2023 Release Notes

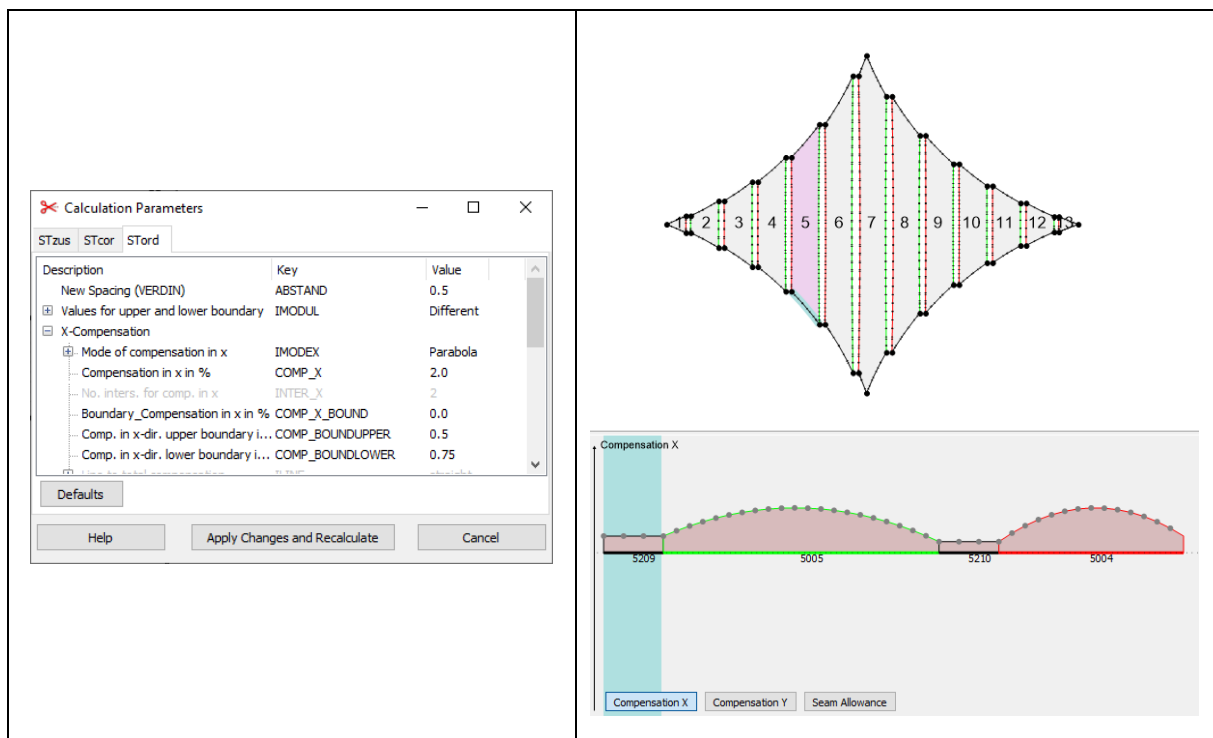
November 2022
technet GmbH, Breitscheidstraße 4, 70174 Stuttgart, Germany

9 Easy Tailor

- In the strip overview there is a new context menu item "Select Boundary" which marks all parts of a boundary cable.



- The editing of the compensation values in the table has been improved.
- Bugfix: Second Boundary Adjustment.
- StOrd: Automatic creation of compensation points in x (=weft)-direction on a parabola. The method 'Parabola' has to be inputted into the Stord Calculation Parameters in the Easy Shell or (as shown here) within the Easy tailor.

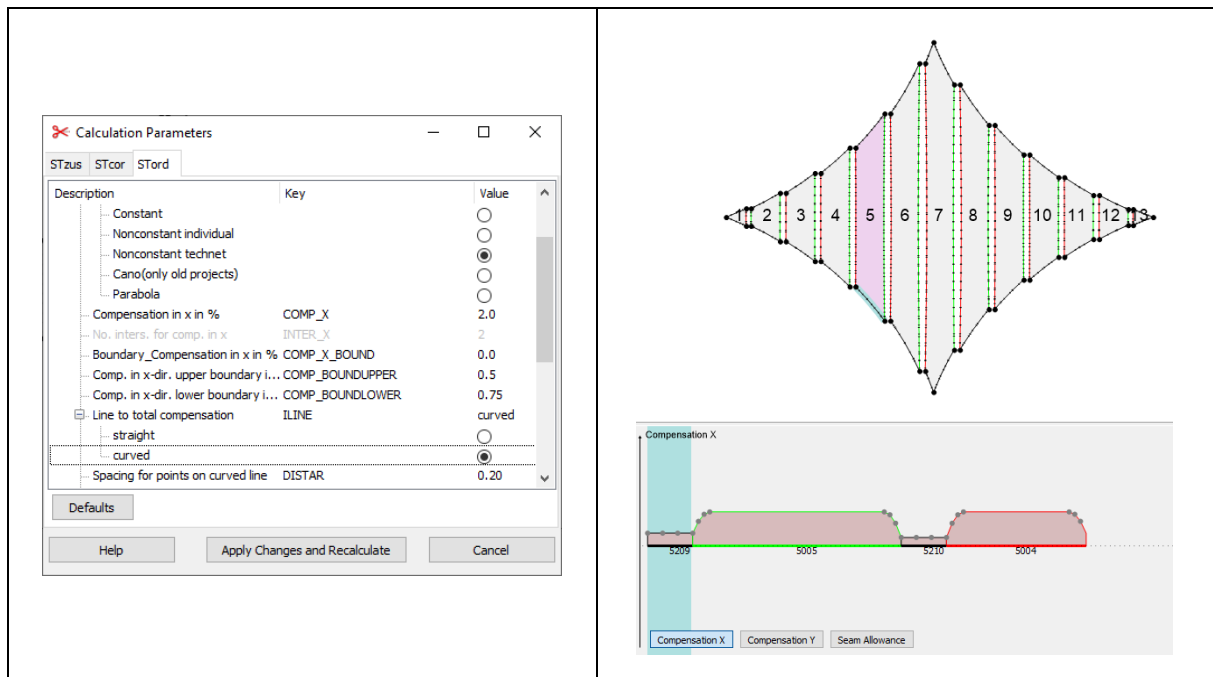


Description	Key	Value
New Spacing (VERDIN)	ABSTAND	0.5
Values for upper and lower boundary	IMODUL	Different
X-Compensation		
Mode of compensation in x	IMODEX	Parabola
Compensation in x in %	COMP_X	2.0
No. inters. for comp. in x	INTER_X	2
Boundary_Compensation in x in %	COMP_X_BOUND	0.0
Comp. in x-dir, upper boundary i...	COMP_BOUNDUPPER	0.5
Comp. in x-dir, lower boundary i...	COMP_BOUNDLOWER	0.75

Diagram labels: Compensation X, 9209, 5005, 5210, 5004, Compensation X, Compensation Y, Seam Allowance

Easy 2023 Release Notes

Automatic creation of compensation points in x (=weft)-direction on a parabola on the 'line to total compensation'. It is part of X-Compensation -> Nonconstant technet. Now we have the choice to create 2 different lines to total compensation: straight or curved. In case of the curved line the variable DISTAR can be set.



10 Brep2Easy – Rhino Plugin

Bug fix: If there are only 3 points in a boundary polygon, it could happen that wrong point IDs were present in the generated eck-file. This error has been corrected.