

# Easy 2024 Release Notes



December 2023  
technet GmbH, Breitscheidstraße 4, 70174 Stuttgart, Germany

---

## Contents

- 1 Installing ..... 2
- 2 System Requirements ..... 2
- 3 New program Easy.Static ..... 2
- 4 EasyShell ..... 3
- 5 Easy.Wind ..... 4
- 6 Graphic editor GED ..... 4
- 7 BeamEditor ..... 4
- 8 EasyTailor ..... 4
- 9 Licensing ..... 5

# Easy 2024 Release Notes

December 2023  
technet GmbH, Breitscheidstraße 4, 70174 Stuttgart, Germany

## 1 Installing

Please note that installing Easy Release 2024 will not overwrite an older (2023, 2022, ...) existing installation of Easy. You can use Easy 2024 and an older release of Easy on the same computer.

## 2 System Requirements

Operating systems:

- Windows 11 (current service pack) 64-bit
- Windows 10 (current service pack) 64-bit

Minimum Hardware:

- A graphic card with an OpenGL accelerator is strongly recommended.

## 3 New program Easy.Static

The Easy System has been expanded with a new Easy.Static module. Easy.Static combines the previous modules Easy.Stat, Easy.Beam and Easy.Volume (Statical Analysis) into a single program. All work can now be carried out in a standardized user environment.

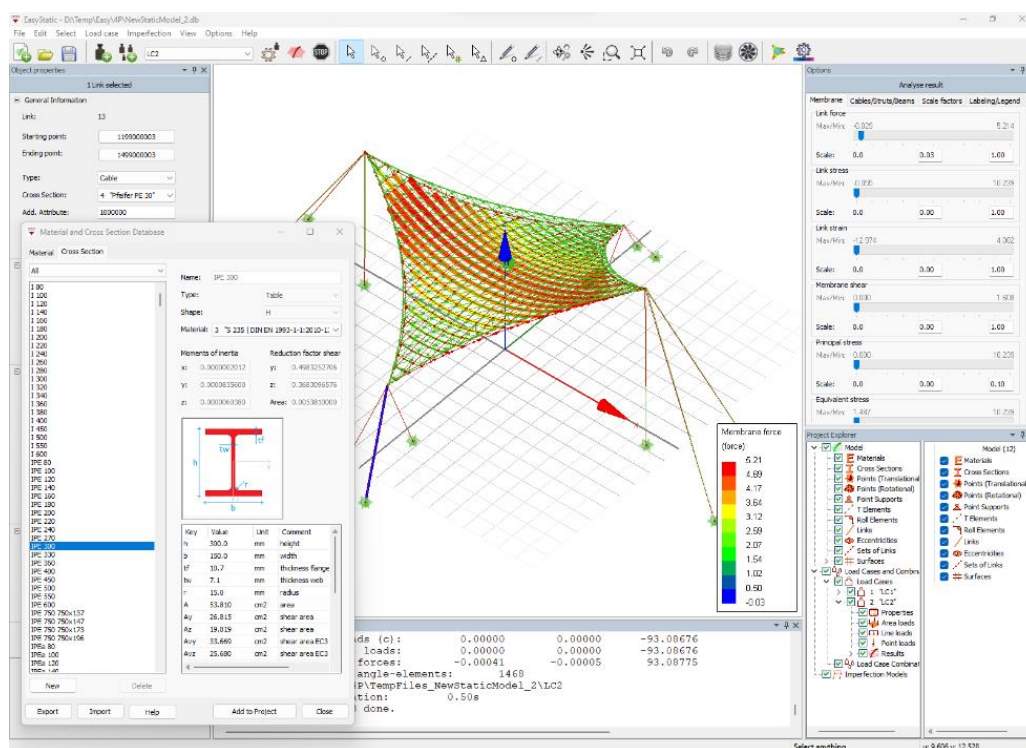


Figure 1: New Easy.Static module

# Easy 2024 Release Notes

December 2023  
technet GmbH, Breitscheidstraße 4, 70174 Stuttgart, Germany

The new program is defined by the following main features:

- One program for the calculation of axial, beam, and volume models
- Material and cross-section database, filled with common steel, membrane (Type I-IV approx. values), cable materials and cross-sections. 19 different cross-section types. Cross sections according to table values and parameterized profiles.
- Definition of load cases and combinations
- Visual result analysing
- Design code checking according to Eurocode 3
- Imperfection models
- Report generation
- Data storage in SQL database
- Connection to digital wind tunnel Easy.DWT

## 4 EasyShell

The new Easy.Static program has been integrated into the Easy Shell. You can switch between classic and new static editing in the settings dialog:

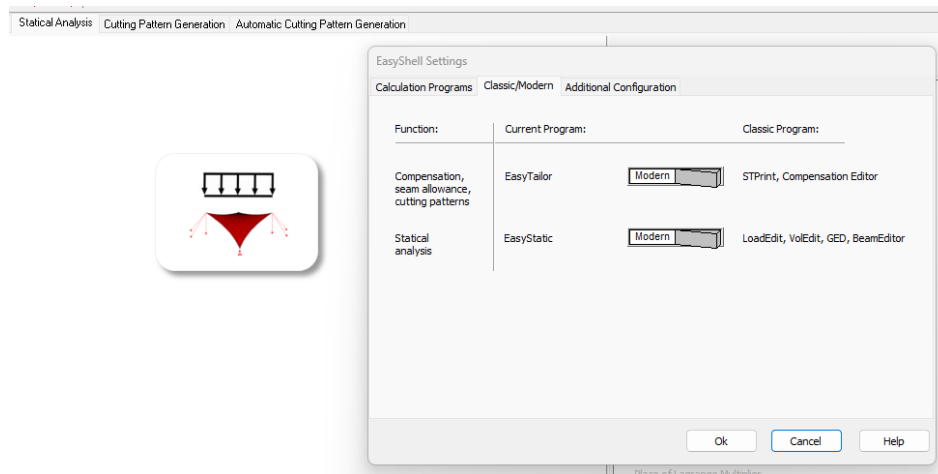


Figure 2: Switching between old and new modules

# Easy 2024 Release Notes

December 2023  
technet GmbH, Breitscheidstraße 4, 70174 Stuttgart, Germany

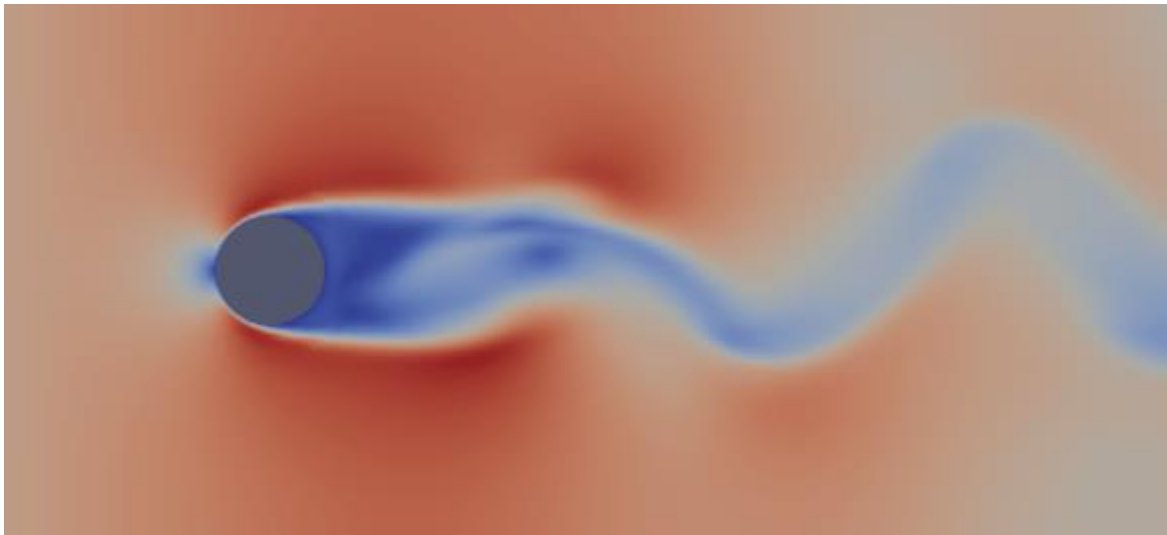


---

## 5 Easy.Wind

The Easy digital wind tunnel (Easy.DWT) has been expanded to include the following points:

- The solver can be manually stopped before reaching the stop criteria (press stop button while solver calculation).
- Import of STL data format (only ASCII variant)
- Integration of transient wind simulation with turbulence model Spalart-Allmaras DDES. Export of result at any simulation time.



*Figure 3: Wind behavior around a tube generated with transient simulation*

## 6 Graphic editor GED

Deflection: The number of decimal places can be set.

## 7 BeamEditor

- Change: Export point coordinates with double precision instead of single precision in RStab8 interface
- Bugfix: Editing of rotational points

## 8 EasyTailor

- 2<sup>nd</sup> Boundary Adjustment: Create report of uncompensated values with values of first calculation pass.
- Cutting Pattern Overview: Show length change in percent.

# Easy 2024 Release Notes

December 2023  
technet GmbH, Breitscheidstraße 4, 70174 Stuttgart, Germany



---

## 9 Licensing

Easy Release 2024 requires a new password!

Easy2024 requires the latest drivers for the protection plug. If you receive the following error message when starting the program, you must install the provided Sentinel driver on your computer and, if necessary, on a license server.

