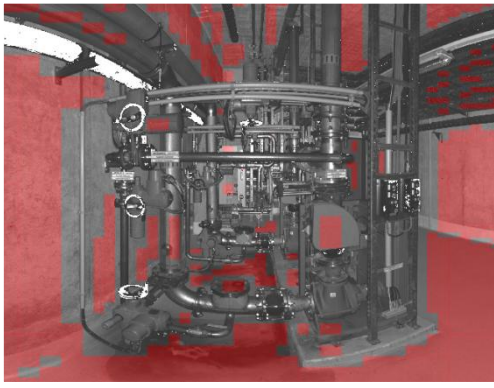
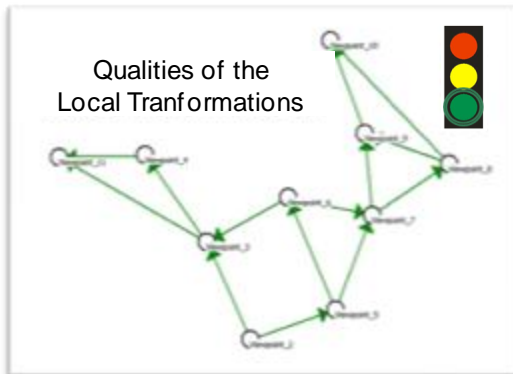


Automatic Registration of 3D Laser Scan Data **without** Targets

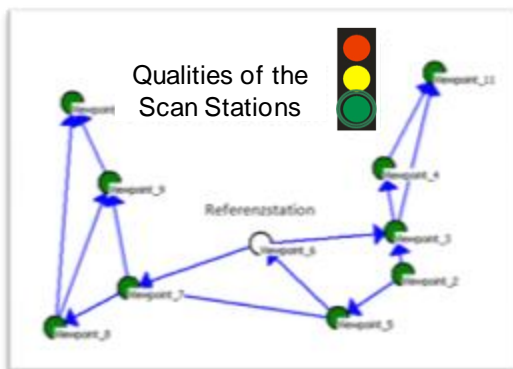


Automatic detection of
existing planes
within all scans



Automatic matching of plane
identities in all defined
scan pairs

Calculation of high-precision
reliable pairwise
transformations



Block adjustment of all scans
into a unique
reference frame

Supply of
accurate and reliable
transformation parameters

With **Scantra** your data fit together